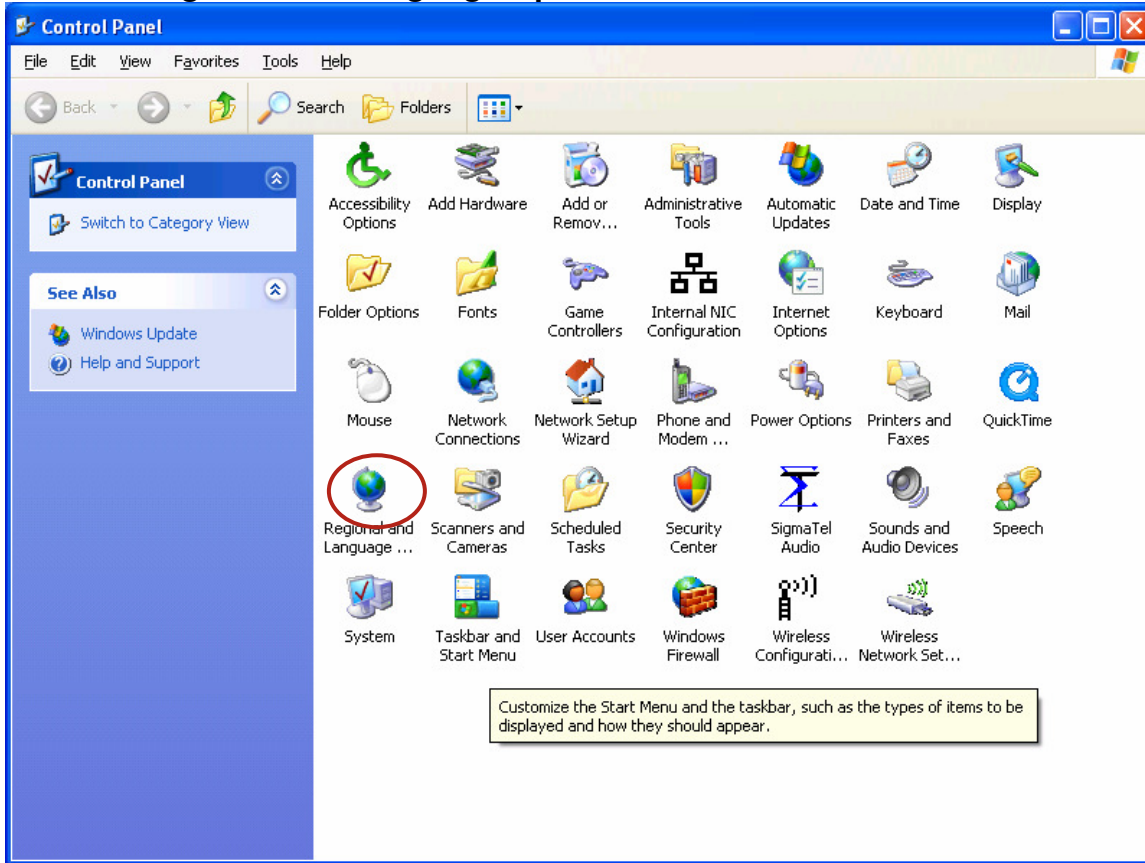


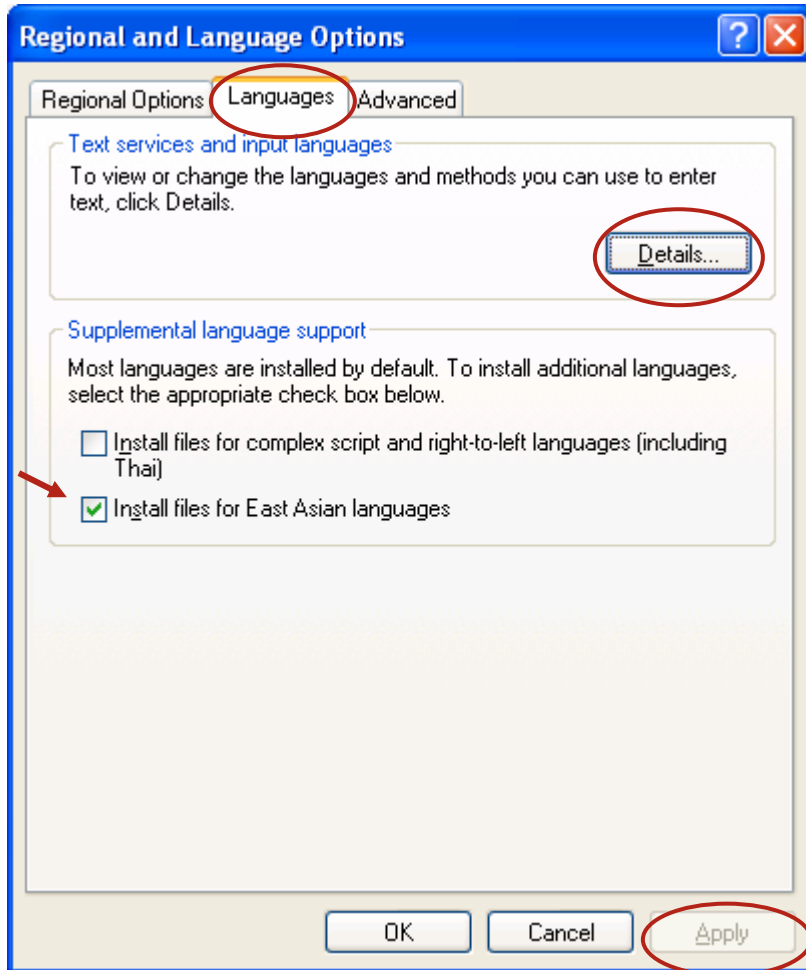
## Chinese Writing Tutorial Page Traditional Chinese Characters PC XP

### Traditional Chinese on a PC

1. Go to the **START** menu and open the **Control Panel**.
2. Select **Regional and Language Options**.

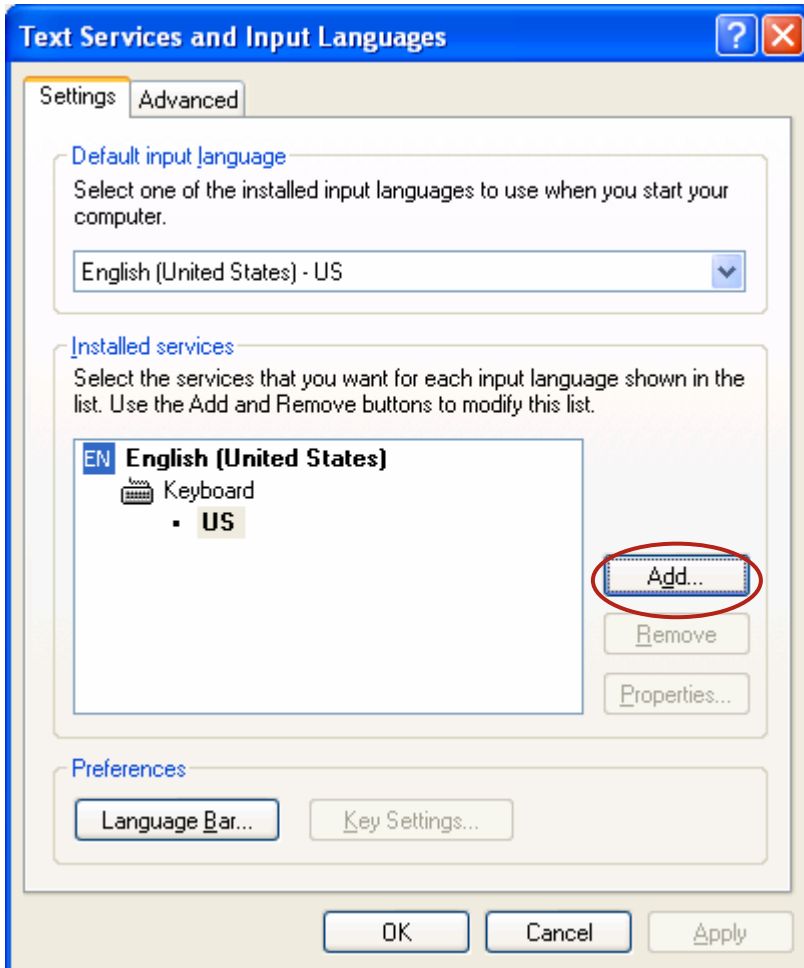


3. Choose the **Languages** tab and click on **Install files for East Asian Languages**. Click **Apply**.

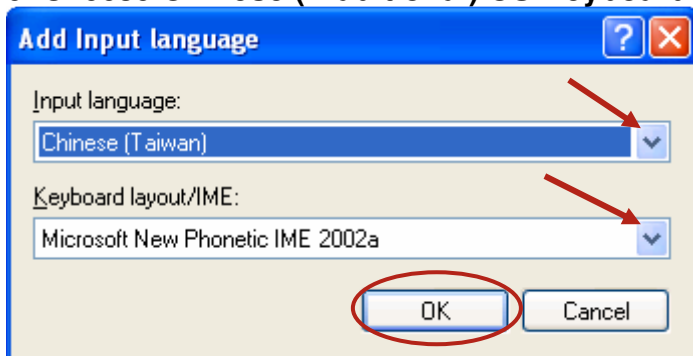


4. On the same window choose **Details**.

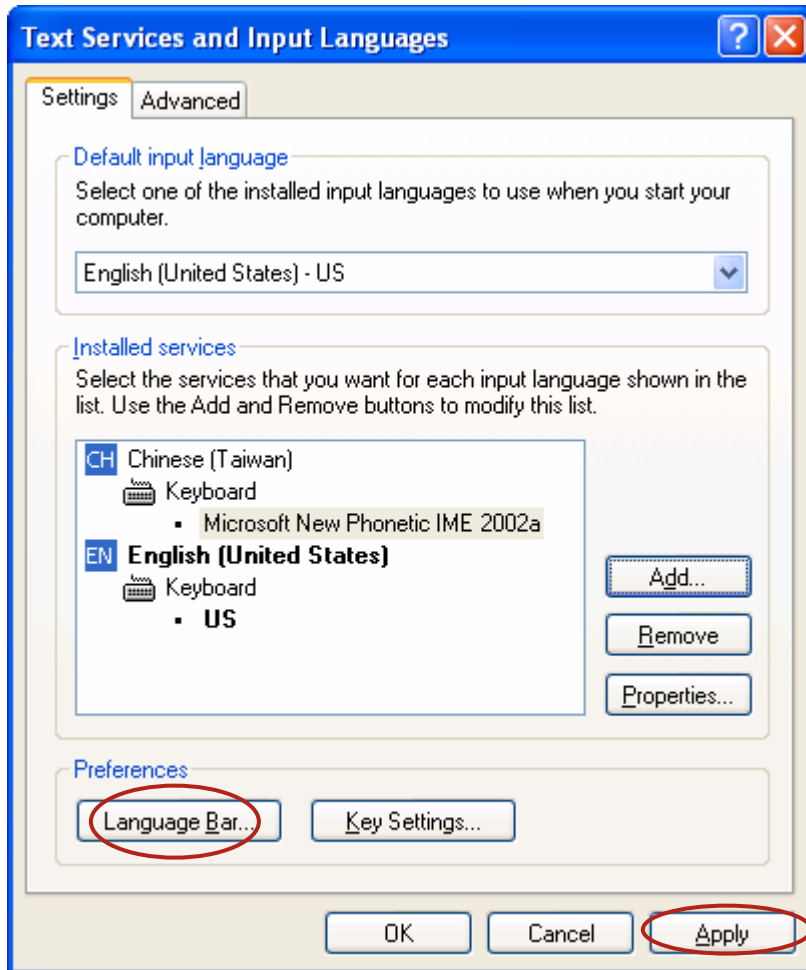
5. In the **Settings** tab make sure the Default input language is English then click **Add..**



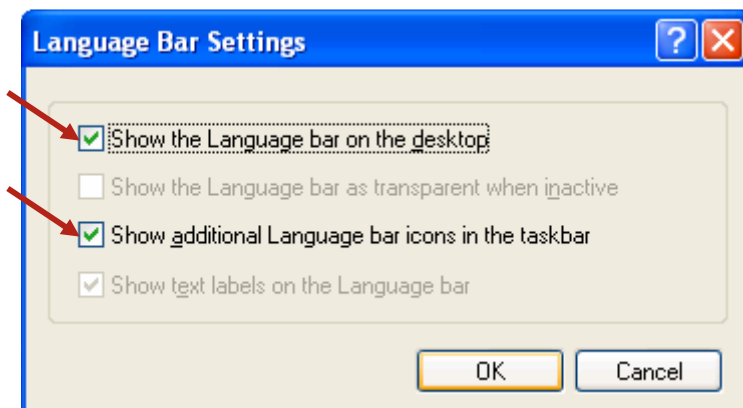
6. Choose **Chinese (Traditional) US Keyboard**. Click OK.



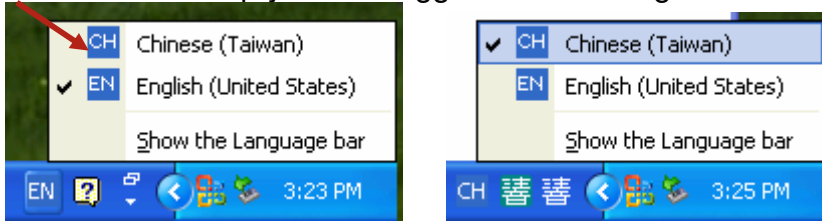
7. From this page you will set the **language bar**.



8. From the Text Services box, click on the **Language bar**. In **Language Bar Settings** select **show language bar** on desktop, and go to the Text Services menu, Settings tab and click **Apply**.



9. On the desktop you can toggle between English and Chinese. Click OK.

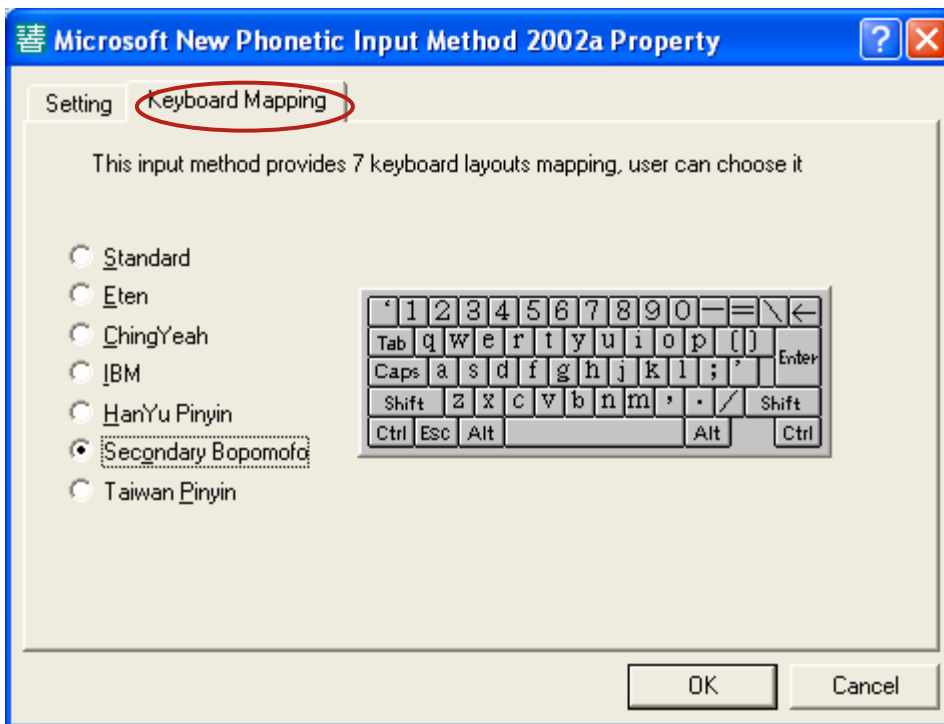


10. Click **show the language bar**



11. From this view you can choose your language input type. Choose **Chinese**. (You may have to open Word to see the different options.)

12. For Bopomofo, from **Tools, Properties, Keyboard Mapping** you can choose what kind of keyboard layout you prefer.



13. Finally, have the students take the practice test in order to familiarize them with the Chinese input system. (<http://www.avantassessment.com/stampdemo1.php>) You may choose additional input systems for different students' preferred style writing.

14. With the **HanYu Pinyin** you can type the word *hua* may look like this 華. If you don't want that word then you can use the down arrow key to bring up a list of characters.