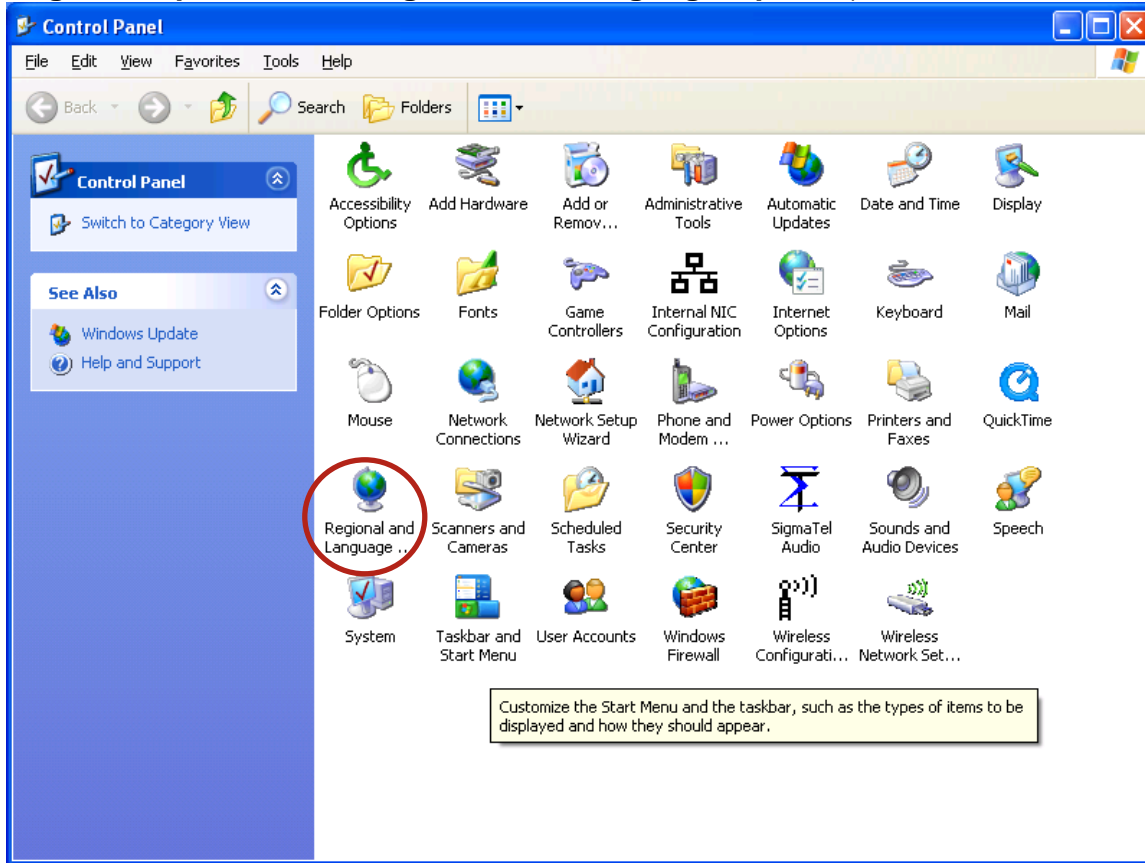


Character Activation Guide Japanese PC XP

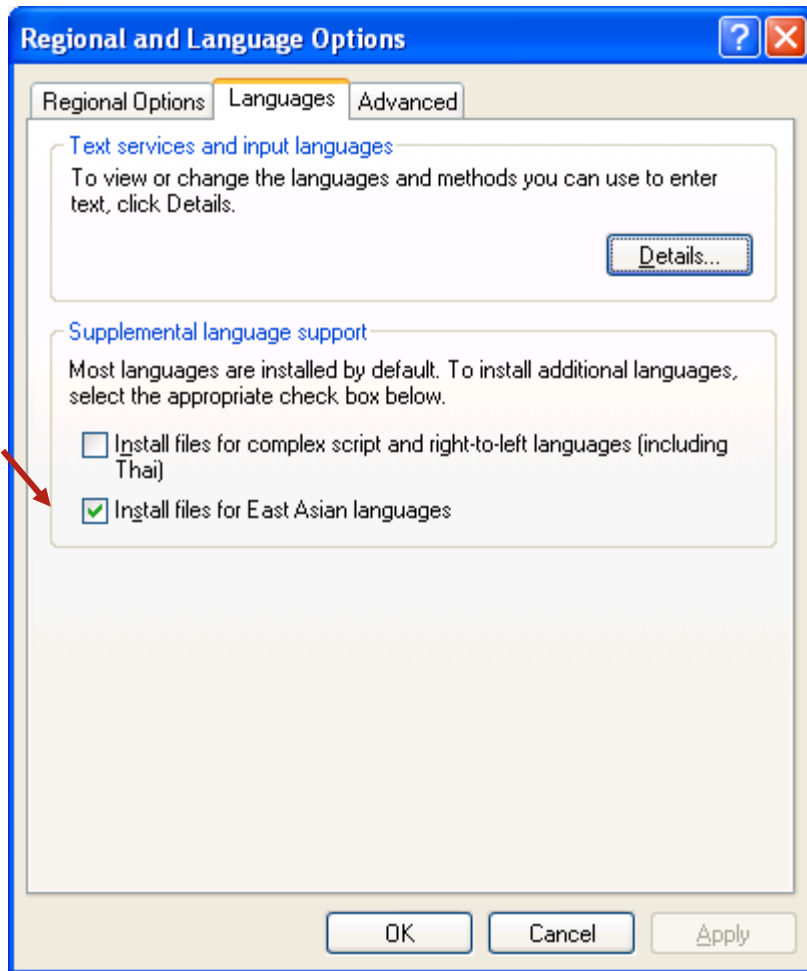
1. Go to the **Start** menu and open the **Control Panel**.
2. Select **Regional and Language Options** (if in Category View, select **Date, Time, Language, and Regional Options**, then **Regional and Language Options**).



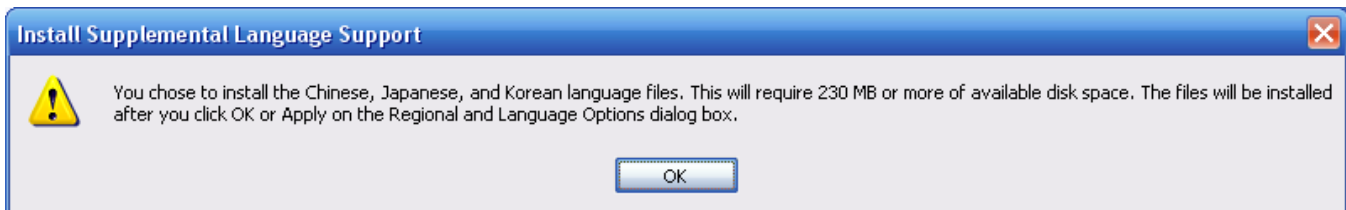
3. The **Regional and Language Options** window will appear. Choose the **Languages** tab.

If East Asian languages are not already installed on the computer:

1. Click on **Install files for East Asian Languages**. Click **Apply**.



2. The **Install Supplemental Language Support** window will appear. Click **OK**.

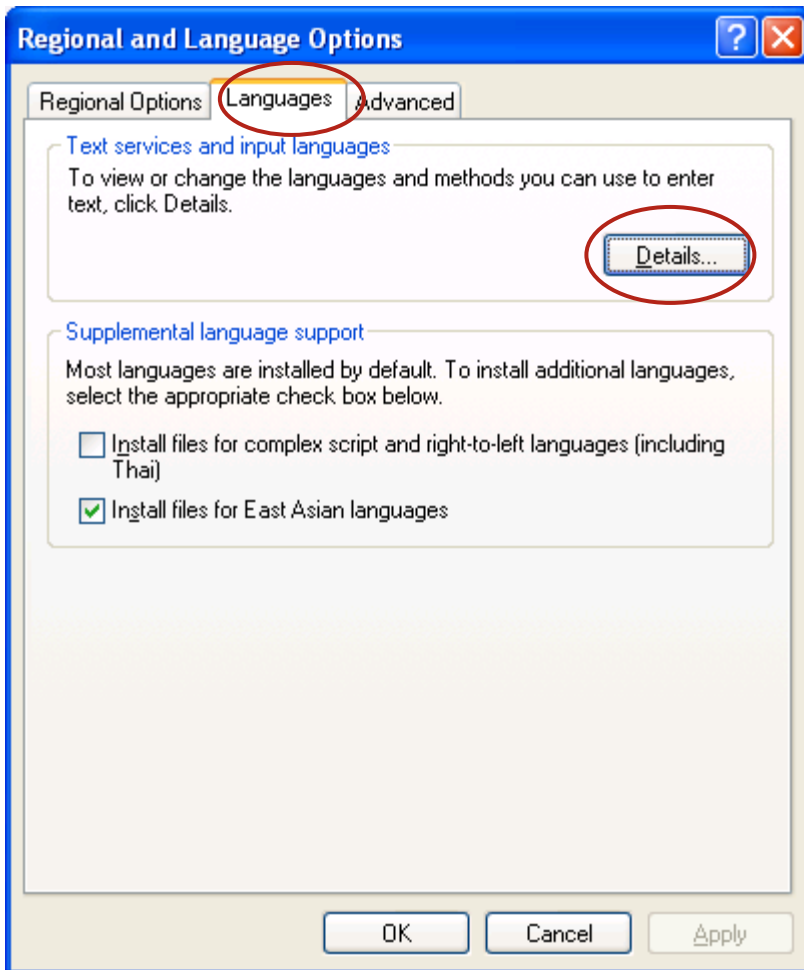


3. The **Regional and Language Options** window will reappear. Click **Apply**.

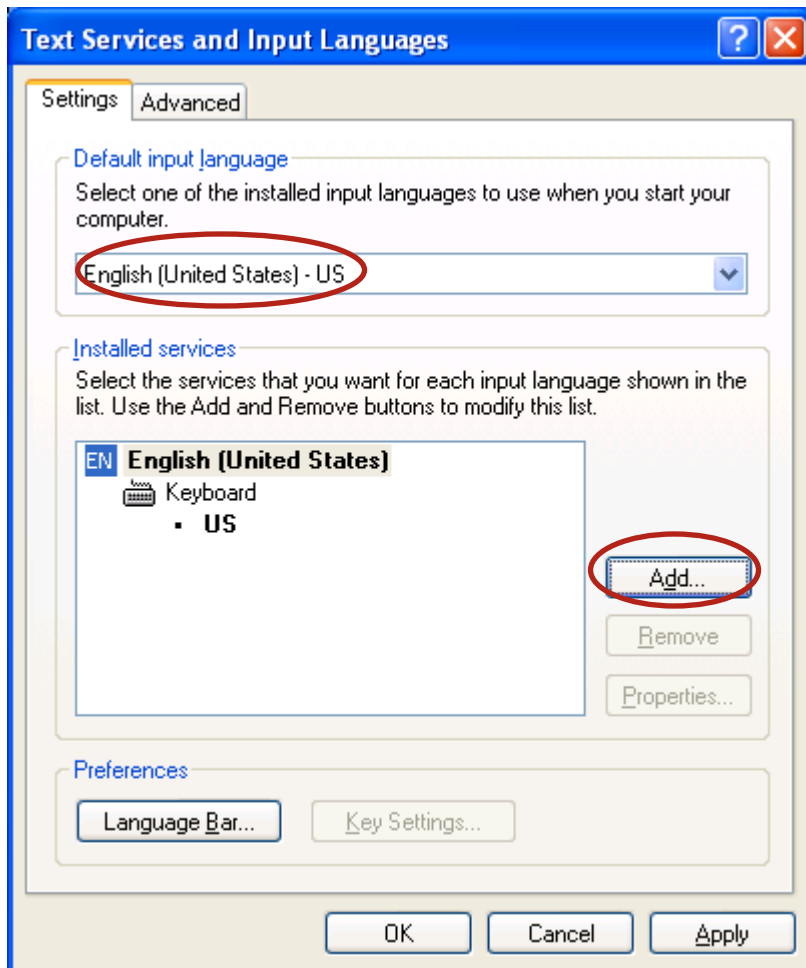
4. After the files are installed, if you get a message about restarting your computer, do so.
5. After the computer has restarted, return to the **Languages** tab of the **Regional and Language Options** window.

Continue with Character Activation:

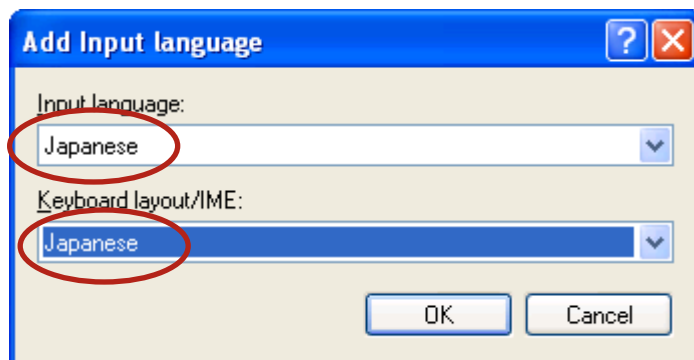
1. On the **Languages** tab of the **Regional and Languages Option** window, choose **Details**.



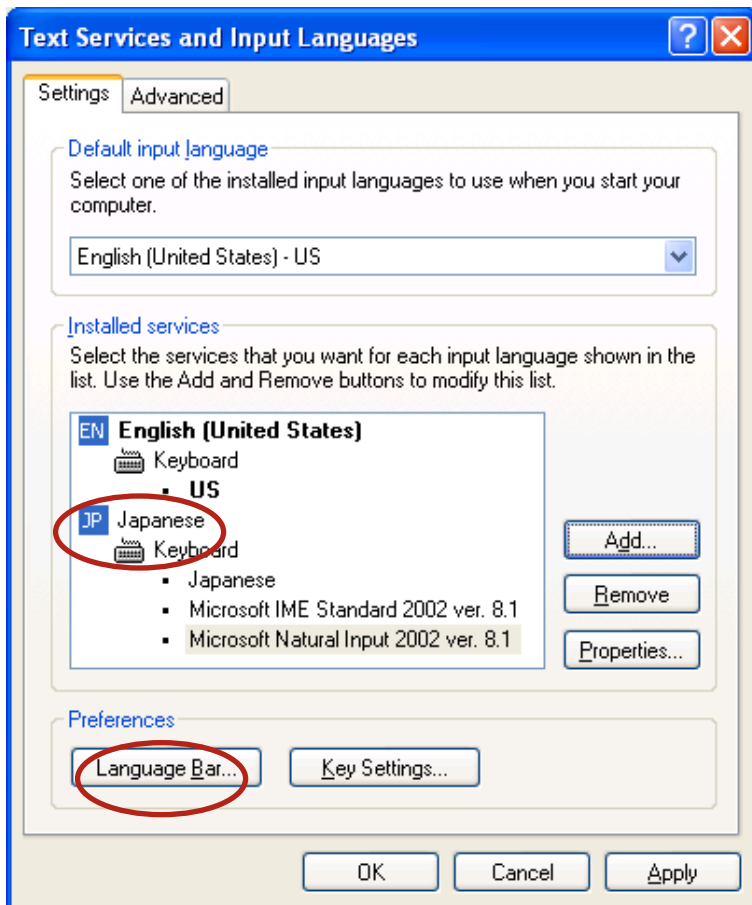
2. The **Text Services and Input Languages** window will appear. In the **Settings** tab make sure the **Default input language** is English then click **Add**.



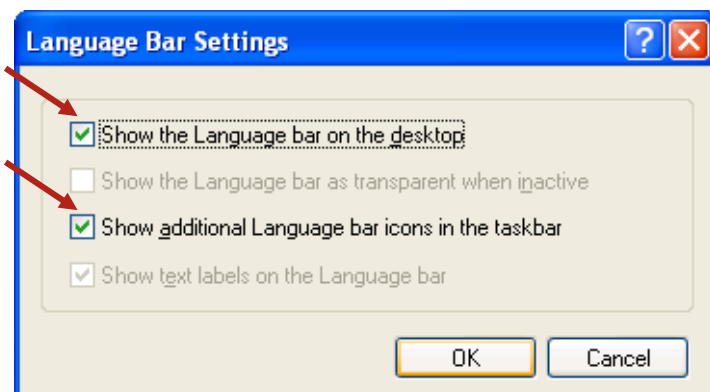
3. On the **Add Input Language** window, choose **Japanese** for **Input language** and **Japanese** for **Keyboard layout/IME**. Click **OK**.



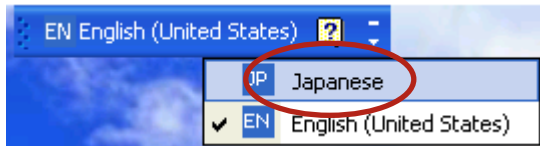
- The **Text Services and Input Languages** box will reappear. Check that **Japanese** is added in the **Installed services** box.
- Click on the **Language bar** button.



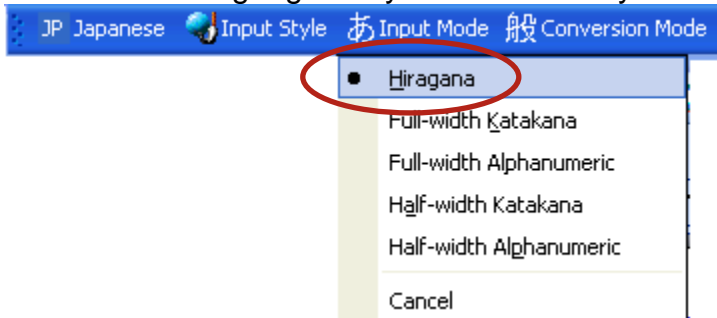
- In **Language Bar Settings**, select **Show the language bar on the desktop** and **Show additional Language bar icons in the taskbar**.
- Click **OK**.



8. The **Text Services and Input Languages** window will reappear. On the **Settings** tab, click **Apply**, then click **OK**.
9. If the **Regional and Languages Option** window reappears, click **OK**.
10. On the desktop taskbar, click on the **EN** icon, then click to select **JP**.



11. From the language bar you can choose your keyboard types and choose your typing mode.



12. Practice with the character input system before the test by taking the STAMP practice test (<http://www.avantassessment.com/stampdemo1.php>) or by using a Word document or a text edit program.